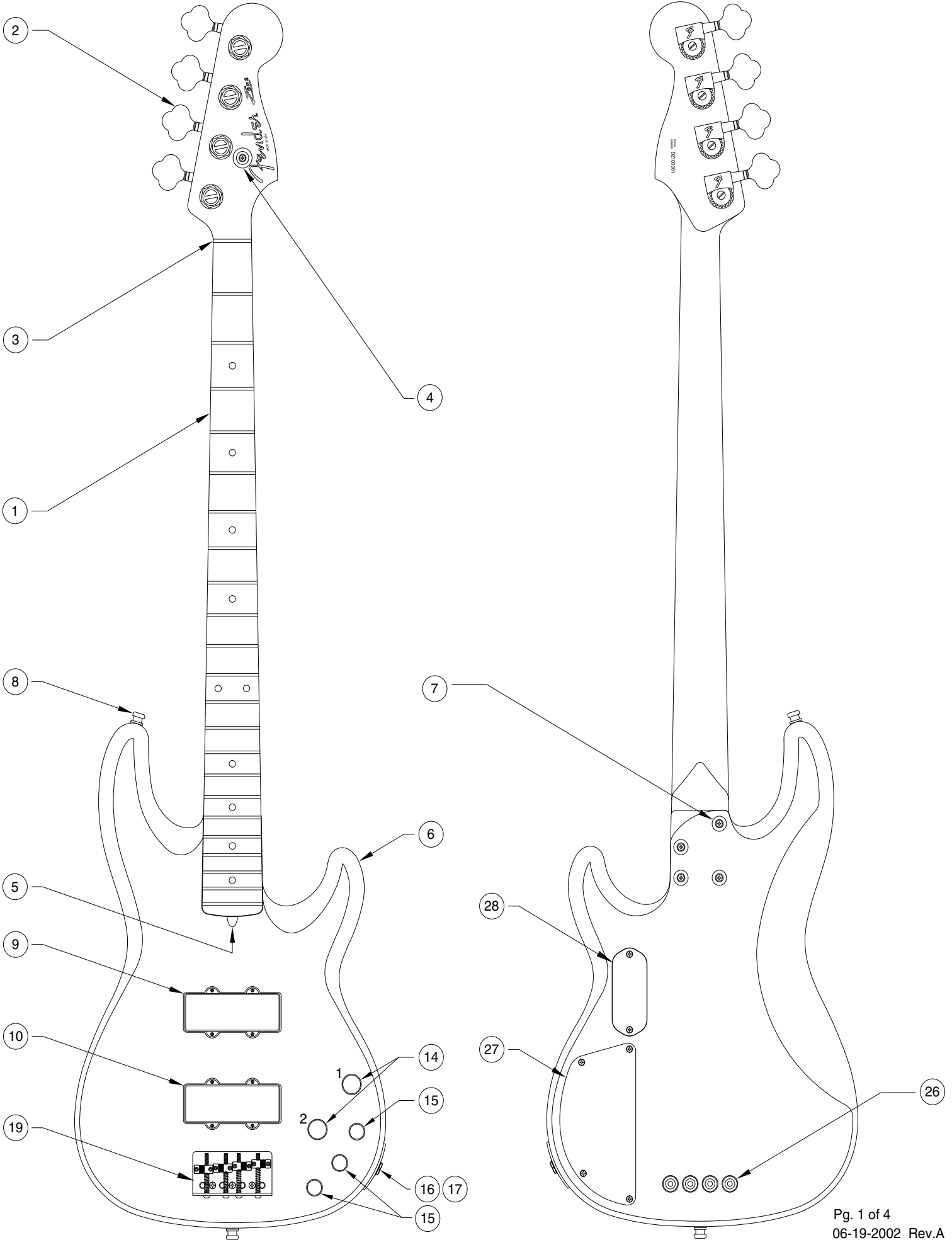
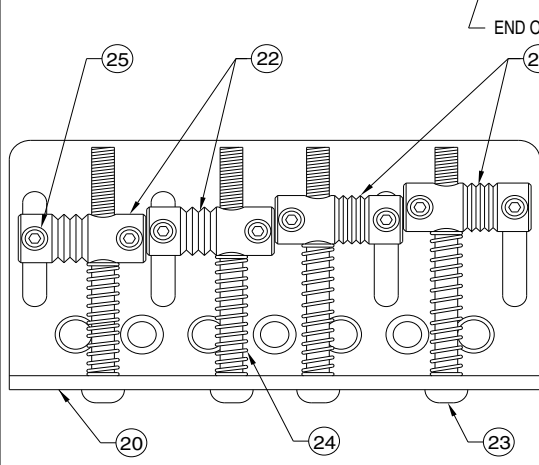
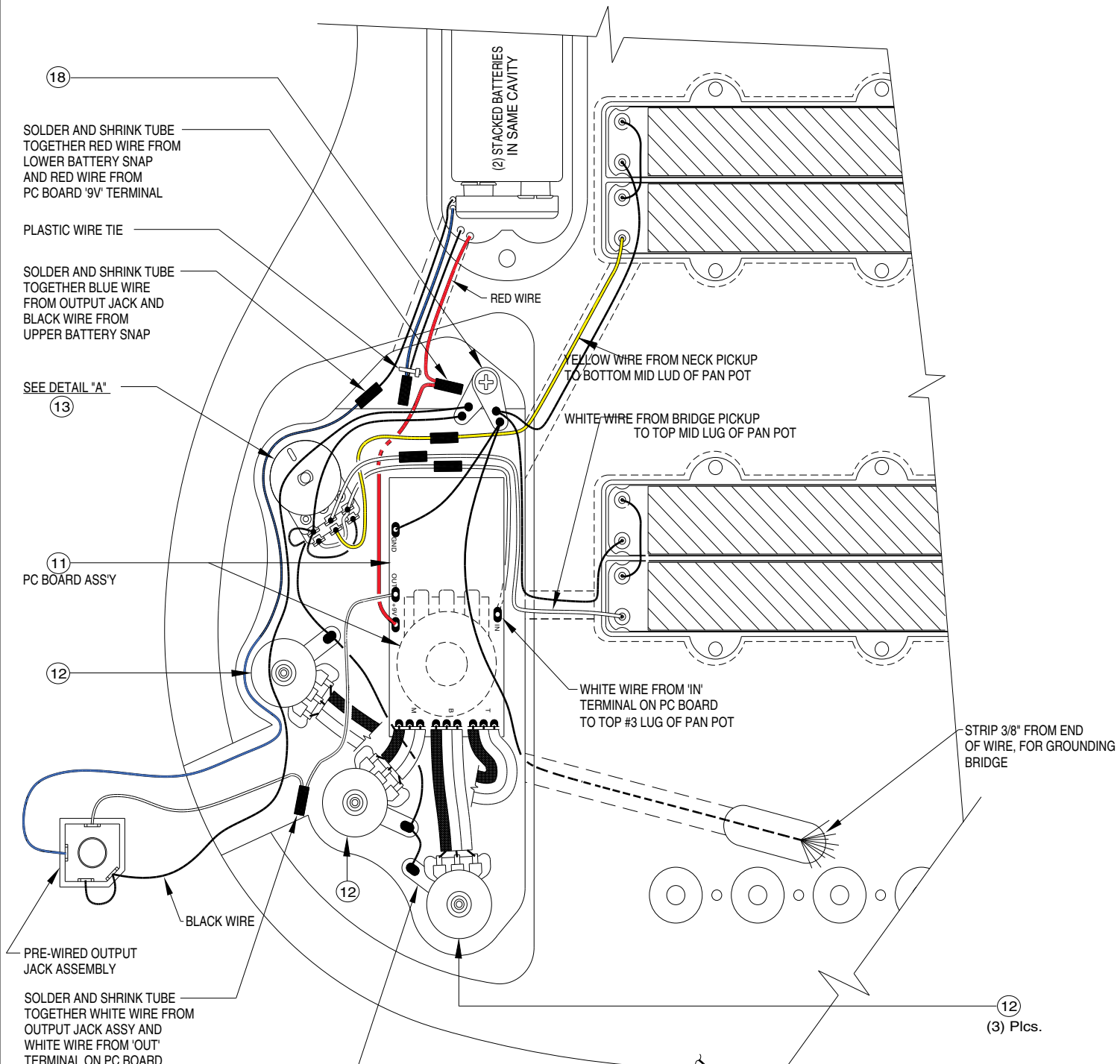


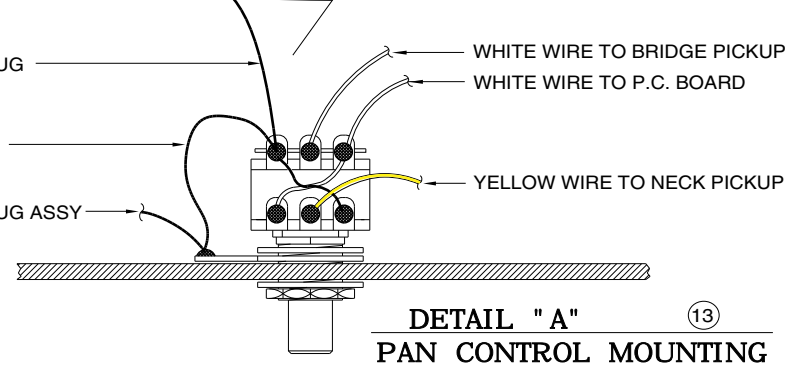
ZONE BASS (U.S.) 0199500



ZONE BASS (U.S.) 0199500



BRIDGE ASSEMBLY



DETAIL "A"
PAN CONTROL MOUNTING

ZONE BASS (U.S.) 0199500

REF.#	P/N	DESCRIPTION
1	0058230000	Neck, Zone Bass (U.S.), R/W
2	0058216000	Tuning Keys, (1) Set
3	0048649000	Bone Nut
4	0021958000	String Retainer
	0018784000	Mounting Screw
5	0048688000	Truss Rod Adjustment Nut
	0048693000	Truss Rod Adjusting Wrench
6	0058228xxx	Body, Zone Bass (U.S.), Maple Paint
	0058229xxx	Body, Zone Bass (U.S.), Walnut Paint
7	0058415000	Ferrule, Neck
	0018785000	Mounting Screw
8	0021950000	Strap Button
	0018845000	Mounting Screw
	0019056000	Felt Washer, Black
9	0058435000	Pickup, Neck, Zone Bass Dual, HB
	0036810000	Mounting Screw
	0049480000	Cover, Pickup
	0017333000	Weatherstrip, Rubber
10	0058207000	Pickup, Bridge, Zone Bass Dual, HB
	0036810000	Mounting Screw
	0049480000	Cover, Pickup
	0017333000	Weatherstrip, Rubbber
11	0058409000	Printed Circuit Board Ass'y
	0056161000	Control, 25KB, Audio, Pg.1-#2 Knob
	0018824000	Mounting Hex Nut
	0022384000	Lock Washer, Intl
	0018806000	Flat Washer
12	0056160000	Control, 100KB, CNTR DTNT, (3)
	0058793000	Mounting Hex Nut
13	0056162000	Control, 250K, Pan Alpha, Pg.1- #1 Knob
	0018824000	Mounting Hex Nut
	0031153000	Flat Washer
	0018806000	Flat Washer
14	0058457000	Knob, Knurled, Black, (2)
	0028897000	Set Screw
15	0058458000	Knob, Knurled, Black
	0028897000	Set Screw
16	0058251000	Output Jack
	0018824000	Mounting Hex Nut
	0016436000	Washer Lock, Intl
	0018806000	Washer, Flat
17	0058256000	Ferrule, Jack
	0018784000	Mounting Screw
18	0012869000	Solder Lug, (2)
	0015116000	Mounting Screw
19	0058252000	Bridge Assembly
	0018845000	Mounting Screw
20	0058270000	Bridge Plate
21	0058362000	Bridge Section, (1&2)
22	0058253000	Bridge Section, (3&4)
23	0017571000	Intonation Screw, (4)
24	0018872000	Intonation Spring, (4)
25	0021093000	Height Adjustment Screw, (8)
	0021109000	Height Adjustming Wrench
26	0049763000	Ferrule, Jack
27	0056715000	Back Control Plate
	0018113000	Mounting Screw
28	0058410000	Cover, Double Battery
	0030654000	Mounting Screw
	0030688000	Insert
	0017405000	Battery, 9 Volt

Body Part Number	
0058228520	Maple
0058229592	Amber/Walnut

