

Web Link Help File:

Banners

Abstract

- This help file will illustrate how to upload and place banner images on website pages

Procedure

- 1) Sign into the site as website administrator user.
- 2) To begin, select "Banners" from the Content Management menu.(fig. 1)
- 3) Two options are presented on the Manage Banners page:
 - a) Step 1: Clicking on the Go button under step 1 will take the admin. user to the Manage Inventory page where new banner images can be uploaded to the site.
 - b) Step 2: Clicking on the Go button under step 2 will take the admin. user to the Banner List page where the banner images can be assigned to certain pages of the website. (fig 2)

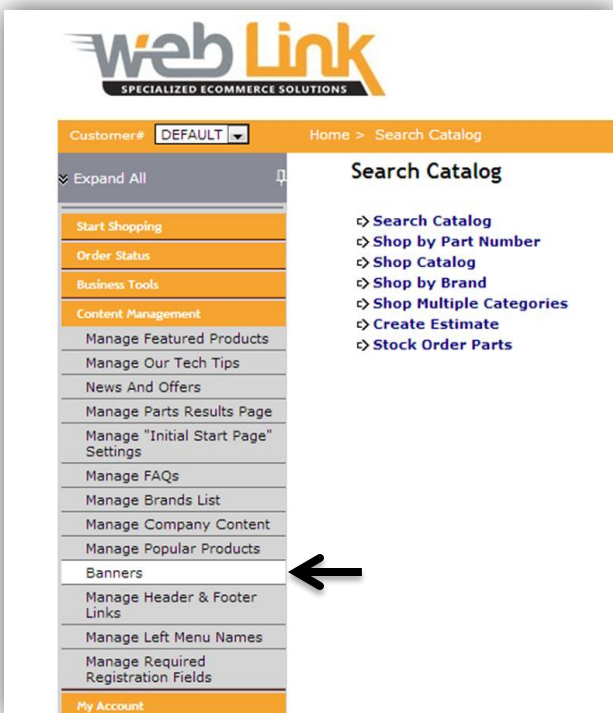


fig.1

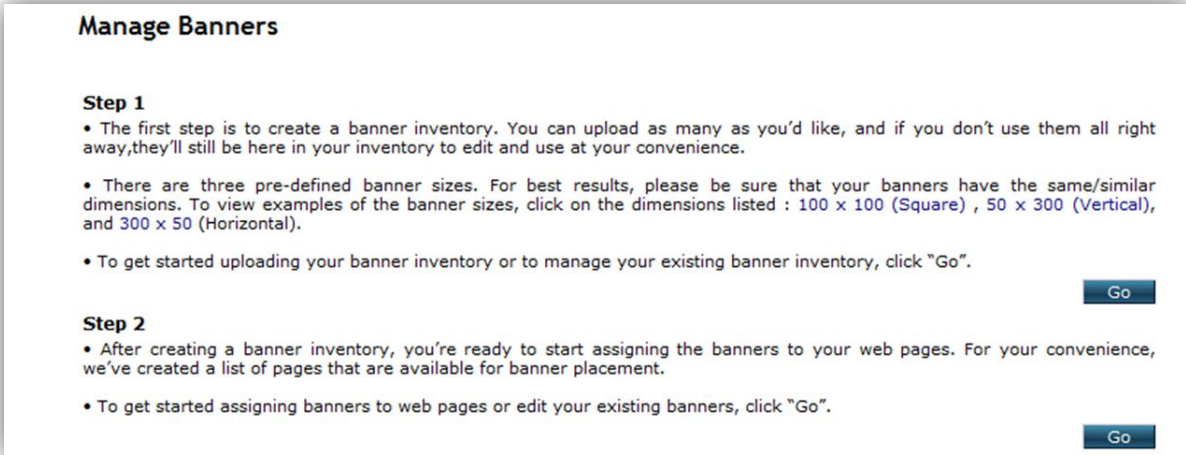


fig.2

4) The Manage Inventory page is essentially a library for all images uploaded to the site. There are three default banner image sizes that can be uploaded: square (100x100 pixels), vertical (50x300 pixels) and horizontal (300x50 pixels). Three separate banks have been created for each of these sizes and all uploaded images should be placed in the appropriate bank which is determined by the size of the image to be uploaded (i.e. images uploaded to the square banners bank should be roughly 100x100 pixels in dimension). (fig.3)

Please note that additional banks with varying dimensions can be added by Web Link. Please make this request by submitting a support case in the Web Link support portal. Fees for customized banner options may be applicable

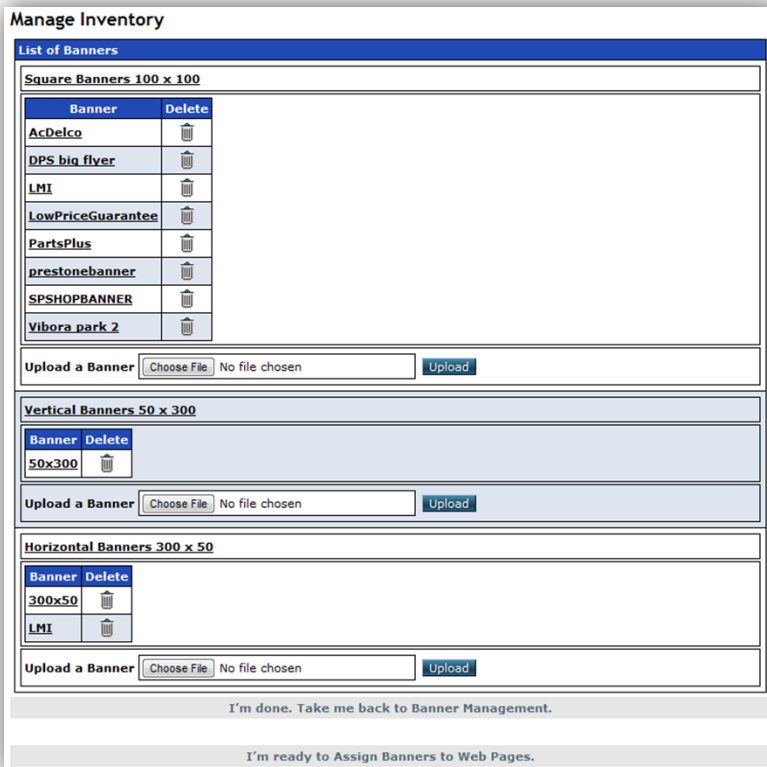


fig.3

5) Once the appropriate bank is identified click the "choose file" button in the "upload a banner" section, locate and select the file stored on your computer and click the "save"

button. Finally, click on the “upload” button to copy the file from your computer to the banner bank.

- 6) After the banner images have been uploaded the next step is to assign them to the desired pages on the site. This assignment is managed from the Banner List page which can be accessed by selecting the “step 2” link on the Manage Banners page or directly from the Manage Inventory page by clicking on the “I’m ready to Assign Banners to Web Pages” link at the bottom of the page.

The Banner List page displays all of the web pages on the site where banner images may be placed. Click on the page from the list where banner images are to be added or edited. (fig.4)

Please note that additional pages may be added by Web Link. Please make this request by submitting a support request.

- 7) The administrator user is then taken to the Assign Banners page which lists all banner images which can be added to the page selected in the previous step. In this example the “Catalog Category Selection Page” was chosen. The banner size for this page is 100x100 pixels and all banner images that were uploaded to the square (100x100 pixels) bank in step 4 above are available here and can be added to this page. One or more images can be added to each web page.(fig. 5)

Please note that the default banner image sizes can be changed by Web Link. Please make this request by submitting a support request.

Banner List	
Page List	
Catalog Category Selection Page	
Landing Page	
Order Summary Page	
Payment	
Shopping Cart page	

fig.4

Assign Banners

Use this page to assign your banners to your web pages. You can click on the page names to view a sample of the page with the available banner sizes and placement. Below each page is the list of banners you have available that can be used. Click on the banner of your choice to assign it. The banners that are currently being used are checked (✓).

Catalog Category Selection Page

List of Banners

Square Banners 100 x 100 -- Catalog Category Selection Page

<input type="checkbox"/>	AcDelco
<input type="checkbox"/>	DPS big flyer
<input type="checkbox"/>	LMI
<input type="checkbox"/>	LowPriceGuarantee
<input type="checkbox"/>	PartsPlus
<input type="checkbox"/>	prestonebanner
<input type="checkbox"/>	SPSHOPBANNER
<input type="checkbox"/>	Vibora park 2

fig.5

- 8) Click on the banner image name (not the check box) that is to be added to the web page. The Banner Configuration Detail pop up window will open which allows for several configuration options:
- a) A banner image preview is presented
 - b) Priority: If more than one image is added to a web page this section will determine the order in which these images are displayed. Each image will be shown in rotation within a set interval (approx. 5 seconds).
 - c) Url: Hyperlinks can be inserted within the image by entering the desired webpage address here.
 - d) New Browser: Select whether the webpage chosen above opens in the same browser window or a new window.
 - e) Tool Tip: If a hyperlink is inserted for the image, a customized message can be entered here which will display when users hover their cursor over the banner image. (fig. 6)

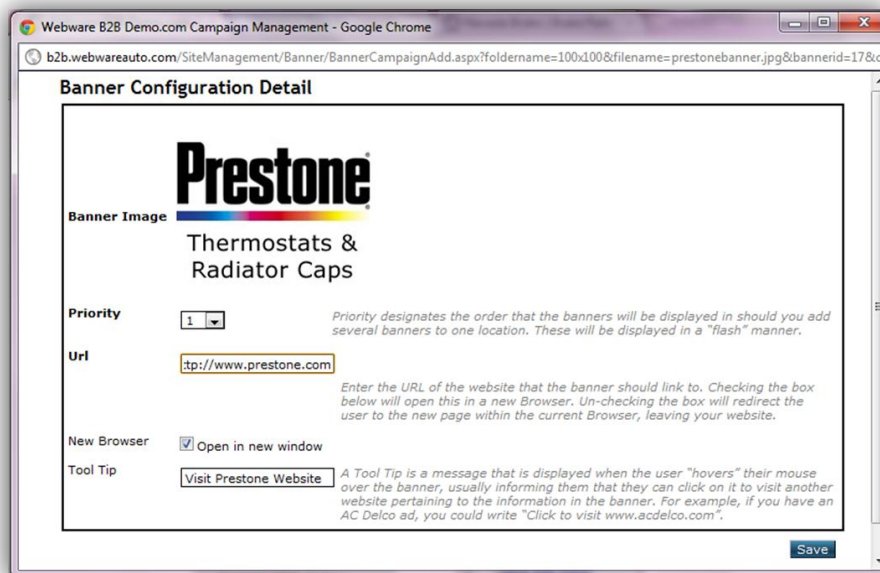
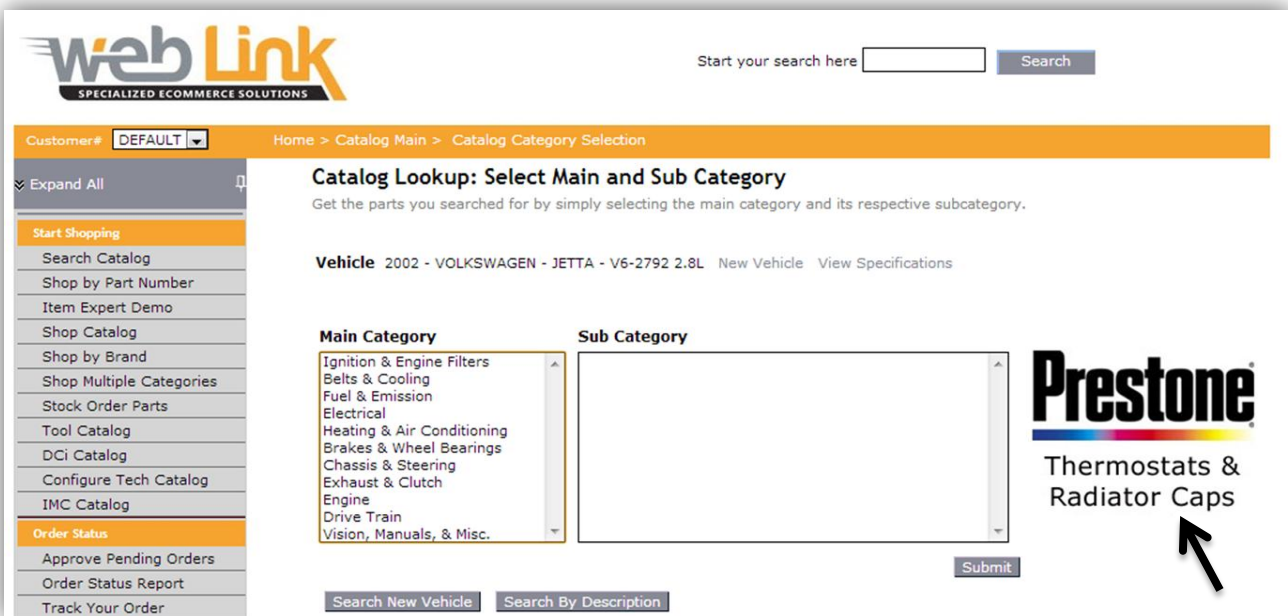


fig.6

- 9) After completing all sections of the Banner Configuration Detail page click the "save" button. The pop up window will close and a checkmark will be placed in the banner image checkbox on the Assign Banners page indicating that the image has been placed on the web page. (fig. 7)
- 10) The banner image placement can be confirmed by visiting the web page. (fig.8)

<input type="checkbox"/>	AcDelco
<input type="checkbox"/>	DPS big flyer
<input type="checkbox"/>	LMI
<input type="checkbox"/>	LowPriceGuarantee
<input type="checkbox"/>	PartsPlus
<input checked="" type="checkbox"/>	prestonebanner
<input type="checkbox"/>	SPSHOPBANNER
<input type="checkbox"/>	Vibora park 2

fig.7



webLink
SPECIALIZED ECOMMERCE SOLUTIONS

Start your search here

Customer# **DEFAULT** Home > Catalog Main > Catalog Category Selection

Expand All

- Start Shopping**
 - Search Catalog
 - Shop by Part Number
 - Item Expert Demo
 - Shop Catalog
 - Shop by Brand
 - Shop Multiple Categories
 - Stock Order Parts
 - Tool Catalog
 - DCi Catalog
 - Configure Tech Catalog
 - IMC Catalog
- Order Status**
 - Approve Pending Orders
 - Order Status Report
 - Track Your Order

Catalog Lookup: Select Main and Sub Category
Get the parts you searched for by simply selecting the main category and its respective subcategory.

Vehicle 2002 - VOLKSWAGEN - JETTA - V6-2792 2.8L [New Vehicle](#) [View Specifications](#)

Main Category

- Ignition & Engine Filters
- Belts & Cooling
- Fuel & Emission
- Electrical
- Heating & Air Conditioning
- Brakes & Wheel Bearings
- Chassis & Steering
- Exhaust & Clutch
- Engine
- Drive Train
- Vision, Manuals, & Misc.

Sub Category

Prestone
Thermostats & Radiator Caps

fig.8